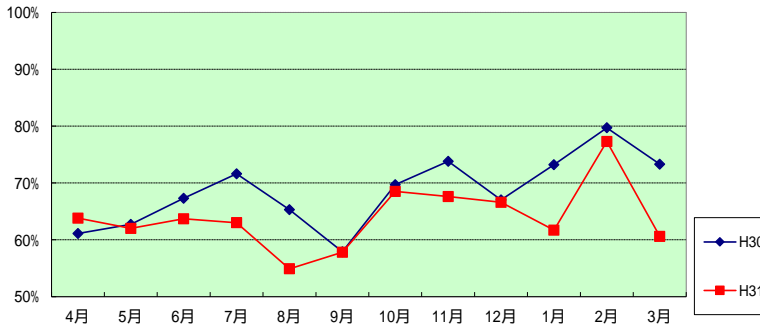


令和1年度 病院統計

国保依田窪病院

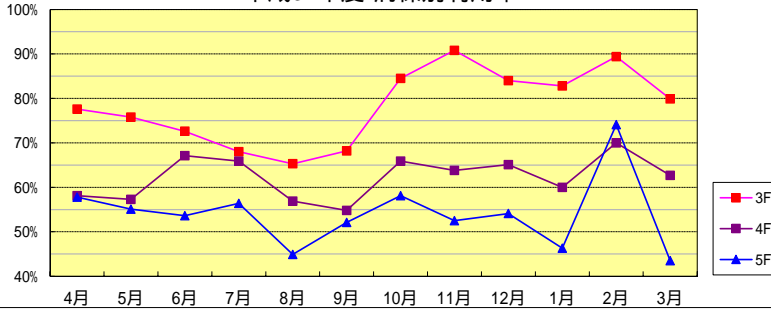
利用率(前年度比)



月別利用率

	H22	H30	H31	前年比	H22比	稼働率
4月	86.6%	61.1%	63.8%	104.4%	73.7%	67.3%
5月	81.7%	62.7%	62.0%	98.9%	75.9%	65.5%
6月	89.0%	67.3%	63.7%	94.7%	71.6%	67.1%
7月	82.1%	71.6%	63.0%	88.0%	76.7%	66.6%
8月	88.8%	65.3%	54.9%	84.1%	61.8%	58.2%
9月	84.8%	57.9%	57.8%	99.8%	68.2%	60.7%
10月	87.7%	69.7%	68.5%	98.3%	78.1%	72.2%
11月	84.7%	73.8%	67.6%	91.6%	79.8%	71.4%
12月	82.2%	67.0%	66.6%	99.4%	81.0%	70.6%
1月	82.0%	73.2%	61.7%	84.3%	75.2%	64.9%
2月	88.9%	79.7%	77.3%	97.0%	87.0%	81.5%
3月	82.8%	73.3%	60.6%	82.7%	73.2%	64.4%
AV	85.1%	68.6%	64.0%	93.3%	75.2%	67.5%

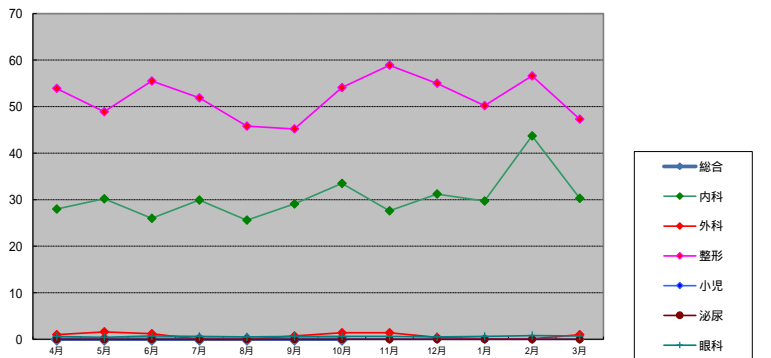
平成31年度 病棟別利用率



病棟別利用率

	3F	前年比	稼働率	4F	前年比	稼働率	5F	前年比	稼働率
4月	77.6%	134.7%	82.6%	58.1%	94.9%	61.1%	57.8%	90.5%	60.5%
5月	75.8%	117.5%	80.1%	57.3%	93.9%	59.9%	55.1%	87.7%	58.7%
6月	72.6%	103.3%	76.9%	67.1%	98.4%	70.2%	53.6%	83.6%	56.6%
7月	68.0%	87.3%	72.7%	65.9%	96.9%	68.4%	56.4%	80.8%	60.2%
8月	65.3%	97.2%	70.1%	56.9%	89.7%	59.3%	44.9%	68.5%	47.7%
9月	68.2%	99.0%	71.7%	54.8%	95.0%	57.4%	52.1%	105.7%	54.9%
10月	68.5%	109.3%	90.2%	65.9%	110.4%	69.2%	58.1%	80.0%	60.5%
11月	90.8%	109.7%	95.5%	63.8%	101.4%	67.0%	52.5%	68.8%	56.1%
12月	84.0%	116.7%	89.4%	65.1%	106.7%	68.5%	54.1%	79.2%	57.4%
1月	82.8%	101.8%	87.0%	60.0%	91.2%	63.0%	46.3%	63.3%	48.9%
2月	89.4%	99.2%	94.2%	70.0%	98.0%	74.4%	74.1%	94.2%	77.7%
3月	79.9%	95.7%	85.1%	62.7%	88.6%	66.2%	43.5%	64.5%	46.2%
AV	78.2%	105.1%	83.0%	62.3%	97.0%	65.4%	54.0%	79.9%	57.1%

平成31年度 1日平均入院患者数



科別1日平均入院患者数

	総合	内科	外科	整形	小児	泌尿	眼科	計(人)
4月	0	28.0	1.0	53.9	0.0	0.0	0.6	83.5
5月	0	30.2	1.6	48.9	0.0	0.0	0.4	81.1
6月	0	26.0	1.2	55.5	0.0	0.0	0.7	83.4
7月	0	29.9	0.0	51.9	0.0	0.0	0.6	82.4
8月	0	25.6	0.0	45.8	0.0	0.0	0.5	71.9
9月	0	29.1	0.7	45.2	0.0	0.0	0.6	75.6
10月	0	33.5	1.4	54.1	0.0	0.0	0.6	89.6
11月	0	27.6	1.4	58.9	0.0	0.0	0.6	88.5
12月	0	31.2	0.4	55.0	0.0	0.0	0.5	87.1
1月	0	29.7	0.1	50.2	0.0	0.0	0.6	80.6
2月	0	43.7	0.1	56.6	0.0	0.0	0.8	101.2
3月	0	30.3	1.0	47.3	0.0	0.0	0.7	79.3
AV	0.0	30.4	0.7	51.9	0.0	0.0	0.6	83.7